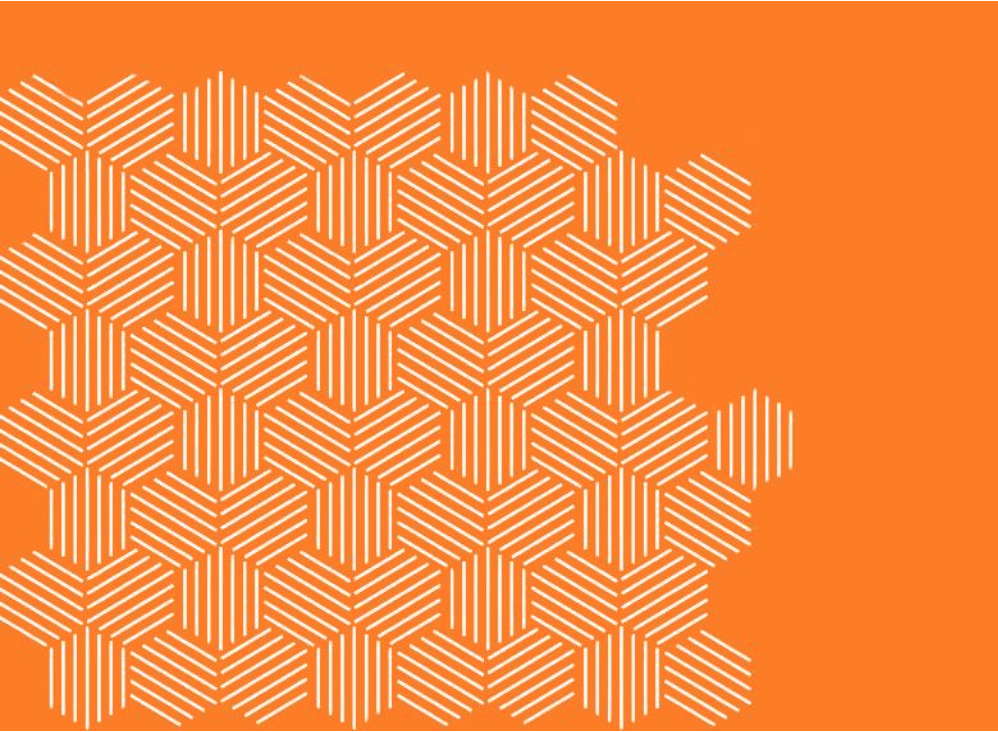


COVID-19 Q&A Hour for Long Term Care: Adult Family Homes



Washington State Department of Health

Healthcare-Associated Infections (HAI) Program

Shoreline, WA

Housekeeping



Attendees will be in listen only mode



Self-mute your lines when not speaking



Type questions into the question window. Please include the type of facility you are from in your question (e.g., NH).



Nursing Home

Participants from long-term care, regulatory, public health



No confidential information presented or discussed. This is an educational webinar and does not constitute legal advice.



Local guidance may differ, please consult with your Local Health Jurisdiction (LHJ):

<https://www.doh.wa.gov/AboutUs/PublicHealthSystem/LocalHealthJurisdictions>

Welcome to the 2021 Q&A Hour!

A chance to connect, ask questions, and learn about the COVID-19 response and infection prevention guidance



Where Can I Find the Q & A Document?

- Posted every Wednesday

- Washington Health Care Association:

<https://www.whca.org/washington-department-of-health-covid-19-qa-session/>

- Washington LeadingAge:

https://www.leadingagewa.org/ill_pubs_articles/copy-resources-preparing-your-community-staff-residents-and-families-for-the-coronavirus/

- Adult Family Home Council:

<https://adultfamilyhomecouncil.org/department-of-health-qa-webinars/>

Panelists

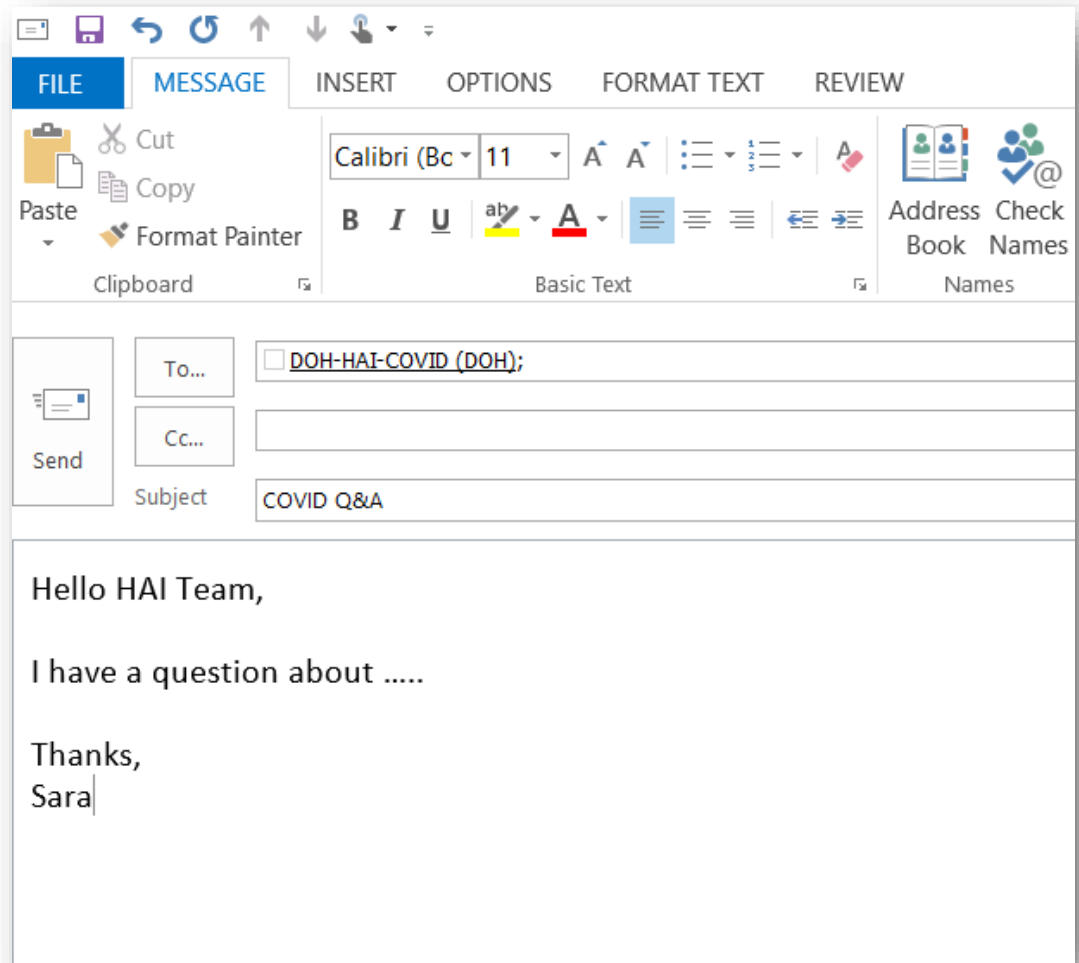


Send Us Your Questions Ahead of Time

Subject Line:
COVID Q&A

Email:
HAI-COVID@doh.wa.gov

Due by: COB Tuesday



Infection Control Assessment & Response (ICAR) Program

Free, non-regulatory ICARs are a great opportunity for skilled nursing facilities, adult family homes, and assisted living facilities to:

- Ask a Department of Health infection prevention expert questions.
- Get help finding gaps in your infection control protocols.
- Receive personalized advice and recommendations for your facility.

There are multiple ways to schedule an ICAR:

- Visit <https://fortress.wa.gov/doh/opinio/s?s=ICARconsultation>
- Email Chris Hankin Chris.Hankin@doh.wa.gov
- Email Melissa Feskin Melissa.Feskin@doh.wa.gov

In partnership with:

- Local Health Jurisdictions
- LeadingAge Washington
- Washington Health Care Association
- Adult Family Home Council of WA State
- Washington State Hospital Association





LONG TERM CARE STAFF:
PSYCHOSOCIAL NEEDS AND
RESOURCES FOR COVID-19 LEAVE

Fear, uncertainty, anxiety..... disbelief.

First Travel-related Case of 2019 Novel Coronavirus Detected in United States

Press Release

For Immediate Release: Tuesday, January 21, 2020

Contact: [Media Relations](#)
(404) 639-3286



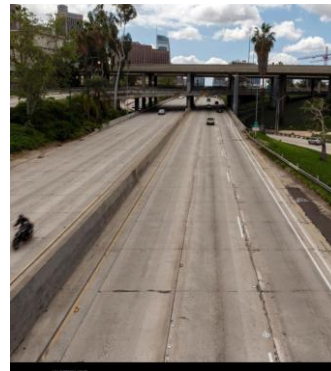
World Health Organization (WHO) @WHO · Jan 4, 2020

#China has reported to WHO a cluster of #pneumonia cases —with no deaths— in Wuhan, Hubei Province . Investigations are underway to identify the cause of this illness.

87

1K

774



Adaptation and resiliency



Exhaustion, confusion, anger, sadness, grief... traumatic stress.



Moral injury, as defined by researchers from veterans' hospitals, refers to the emotional, physical and spiritual harm people feel after "perpetrating, failing to prevent, or bearing witness to acts that transgress deeply held moral beliefs and expectations."

<https://www.sciencedirect.com/science/article/abs/pii/S0272735809000920>

Cautious optimism...



Regions	Trend in case rate	Trend in hospital admission rate	Percent ICU occupancy	Percent positivity
East	-43%	-17%	73%	10%
North	-32%	-17%	53%	6%
North Central	-40%	-60%	87%	10%
Northwest	-43%	-17%	73%	5%
Puget Sound	-41%	-14%	85%	6%
South Central	-41%	-19%	86%	14%
Southwest	-30%	-24%	71%	14%
West	-28%	-31%	82%	7%
Statewide	-40%	-20%	81%	7%

Legend	 Decrease (-10% or more)	 Decrease (-10% or more)	 Low (less than 90%)	 Low (less than 10%)
	 Flat (0% to less than -10%)	 Flat (0% to less than -10%)	 High (90% or more)	 High (10% or more)
	 Increase (more than 0%)	 Increase (more than 0%)		

<https://coronavirus.wa.gov/what-you-need-know/roadmap-recovery-metrics>

Total Vaccine Doses	People Vaccinated	
	At Least One Dose	Fully Vaccinated
Delivered 142,918,525	Total 72,135,616	39,042,345
Administered 110,737,856	% of Total Population 21.7%	11.8%
<small>Learn more about the distribution of vaccines.</small>	Population ≥ 18 Years of Age 71,982,973	38,992,039
	% of Population ≥ 18 Years of Age 27.9%	15.1%
	Population ≥ 65 Years of Age 35,344,640	20,028,351
	% of Population ≥ 65 Years of Age 64.6%	36.6%
	<small>Read more about how these data are reported.</small>	

CDC | Data as of: Mar 16 2021 6:00am ET | Posted: Mar 16 2021 12:26PM ET

<https://covid.cdc.gov/covid-data-tracker/#vaccinations>

How Can We Take Better Care of Each Other?

- Acknowledge- “I know you are [**afraid...tired...angry...worried**], and I am here if you want to talk”
- Pay attention and identify issues early
- Be present and listen- “I want to hear your story”
- Provide support and resources to staff

“Holding these stories means holding the humanness of not being able to rise to every occasion. It means sitting with the grief and loss and tragedy that this pandemic has wrought. It means not being able to fix it, but instead sit with it.”

<http://gretchenschmelzer.com/blog-1/2020/5/4/supporting-resilient-survival-during-covid-19-understanding-traumatic-stress-and-moral-injury-for-health-workers-their-loved-ones-and-health-care-leaders>

Resources for Leave and Services

- Care Connect Washington: Washington State Department of Health
 - provides acute care needs for workers who are off work due to COVID-19 illness or exposure. Care coordinators connect people with resources for financial assistance.
- Washington State Department of Labor and Industries: Paid Sick Leave and Coronavirus (COVID-19) Common Questions
<https://lni.wa.gov/agency/outreach/paid-sick-leave-and-coronavirus-covid-19-common-questions>
- NAMI Frontline Wellness program: <https://nami.org/Your-Journey/Frontline-Professionals>
- Healthcare Personnel and First Responders: How to Cope with Stress and Build Resilience During the COVID-19 Pandemic | CDC
- Washington DSHS Long Term Care Resilience Training (March23): [021-03-03-1.pdf \(wa.gov\)](https://www.dshs.wa.gov/021-03-03-1.pdf)

Resources cont.

- Washington Department of Health Resources
 - [COVID-19 Behavioral Health Group Impact Guide](#) (impacts of pandemic on many different groups: military, healthcare workers, businesses and workers, families and children, educators, etc., with tools and examples of messaging and training)
 - [COVID-19 Guidance for Building Resilience in the Workplace](#)
 - [Coping During COVID-19](#) (sign with wellness tips to hang in staff break areas)

Questions?





To request this document in another format, call 1-800-525-0127. Deaf or hard of hearing customers, please call 711 (Washington Relay) or email civil.rights@doh.wa.gov.

Q&A Portion

Please type your questions into the question window and tell us what type of facility you are from (e.g., ALF, SNF, AFH)